

Direct three-phase meter

MKD

Electronic three-phase energy meter with direct connection for DIN rail mounting



Description

Electronic three-phase meter (active and reactive energy), with a direct connect, for DIN rails and 4 quadrants (measures the active (kW·h) and reactive (kvar·h) energy consumed and generated)

Other features:

- Optional Modbus/RTU communications (type RS-485)
- The current direction can be adjusted
- 2 Impulse outputs with optoinsulated transistor and 2 digital inputs, depending on the type
- Partial meters

Application

- Billing meter: measures energy in the different billing categories (up to 3, depending on the type), adjustable with 2 digital inputs
- Control station of various types of consumption, such as gas, water and electricity

Features

Power supply circuit	110...500 V _{ac} . Between L1-L2 (with the measurement itself)
Maximum consumption	5 V·A
Frequency	45..0.65 Hz
Metering circuit	
Nominal voltage	300 Vac (phase-neutral) 500 Vac (phase-phase)
Maximum consumption: Voltage V _{p-p} < 300 V	2 W - 3 V·A
Voltage V _{p-p} > 300 V	2 W - 20 V·A
Minimum current	160 mA
Nominal current	40 A
Maximum current	120 A
Frequency	45..0.65 Hz
Maximum meter value	9,999,999 kW·h (Minimum resolution of the display 10 w·h)
Class/Accuracy	
Class/Accuracy in Active Energy	Class 1 - IEC 61036
Class/Accuracy in Reactive Energy	Class 2 - IEC 61268
Output transistor	Optoinsulated (collector open) NPN
Maximum switching voltage	24 Vdc
Maximum switching current	50 mA
Maximum Impulse frequency	5 impulse / s
Duration of the Impulse	100 ms ON / 100 ms OFF
Communications	
Type	RS-485
Communication parameters	1200 - 19200 bps, 7/8 bits, parity no / even / odd, stop 1/2
Ambient conditions	
Operating temperature	-20 ... +60 °C
Humidity (non-condensing)	5 ... 95%
Altitude	2000 m
Build features	
Type of box	VO self-extinguishing plastic
Degree of protection	Fitted unit (frontal): IP 51 Non-fitted unit (sides and rear cover): IP 31
Dimensions	6 DIN Modules
Weight	410 g
Safety	
Category III EN 61010-1 . Electric shock protection class II	
Standards	
EN 62052-11, EN 62053-21, EN 62053-23, EN 61010-1	

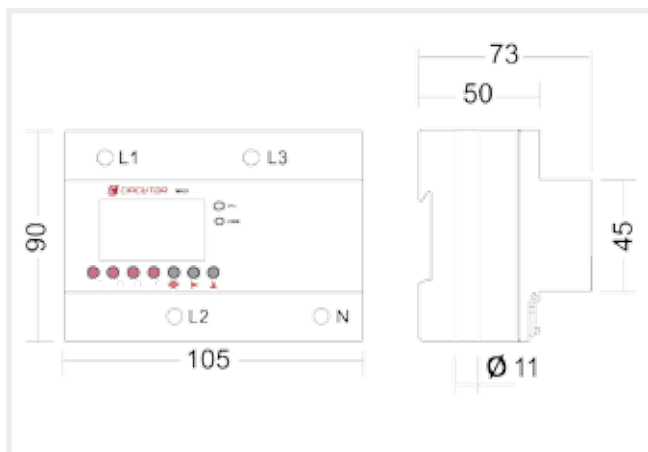
Direct three-phase meter

MKD

Electronic three-phase energy meter with direct connection for DIN rail mountig



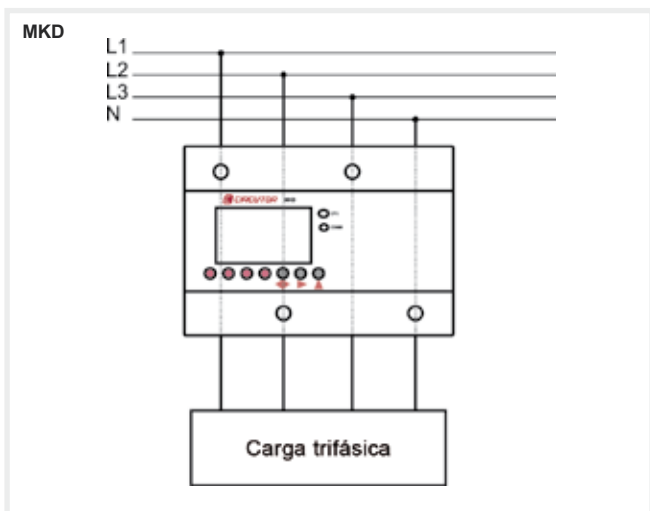
Dimensions



References

Parameters measured	Input range	Partial meters	Quadrants	Communications with the MODBUS (RTU) protocol	Rates	Digital output	Inputs	DIN Modules	Type	Code
kW-h, kvarL-h, kvarC-h	160 mA ... 120 A	Yes	4	-	1	2	0	6	MKD-ITF-C2	M33000
kW-h, kvarL-h, kvarC-h	160 mA ... 120 A	Yes	4	Yes	3	2	2	6	MKD-ITF-RS485-I2-C2	M33011

Connections

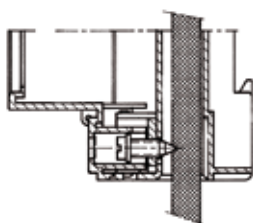


List of unit terminals

Number of number	Concept
1	Impulse output 1
2	Common
3	Impulse output 2
4	B (RS-485)
5	S (RS-485)
6	A (RS-485)
7	Input 1 Digital (stats / impulses)
8	Common
9	Input 2 Digital (stats / impulses)

Diagram

Details of the voltage tap



Transistor output diagrams

